

FREE TO CHOOSE INNOVATIONS

**XORO®**

HTC 1946

HTL 4346

x x x  
x x x  
x x x  
x x x  
x x x  
x x x  
x x x  
x x x  
x x x  
x x x  
x x x  
x x x  
x x x  
x x x  
x x x  
x x x  
x x x  
x x x  
x x x  
x x x



USER MANUAL (ENG)





## Safety instructions

User manual, laser, power supply .....	4
Antenna, Pixel errors, service .....	5
Operation and Installation, Usage .....	6
USB, packaging content, batteries .....	7

<b>Warranty &amp; Recycling Information</b> .....	8
EG-Declaration .....	8

<b>Device</b> .....	9
---------------------	---

<b>Remote control</b> .....	10
-----------------------------	----

## First Steps

Installation, Power supply, Connecting to antenna/dish/cable .....	11
Stands, Wall mounting, Headphone .....	12

<b>First Time Installation</b> .....	13
--------------------------------------	----

<b>Channel search, remote control functions</b> .....	15
---	----

<b>EPG</b> .....	16
------------------	----

<b>Recording</b> .....	17
------------------------	----

<b>Signal sources</b> .....	18
-----------------------------	----

<b>Multimedia Player</b> .....	20
--------------------------------	----

<b>DVD Player (HTC Models)</b> .....	21
--------------------------------------	----

## Main menu

Channel search, Timerlist, .....	23
Signal information, Dish setup .....	24
Screen settings .....	27
Sound settings, Time settings, Setup .....	28
Lock settings, CI/CI+ module .....	29

<b>Troubleshooting</b> .....	30
------------------------------	----

# Safety instructions



The lightning symbol in a triangle alerts the user to dangerous voltages in some exposed components inside the device.



The exclamation point in a triangle alerts the user to important operating and maintenance instructions (Service) in this manual, which should be strictly adhered to. The equipment has been tested and found to comply with FCC standards for the standards of a class B device. These standards have been developed to avoid interference with other domestic electrical appliances or reduce. This equipment can cause radio waves and it is not installed as prescribed in the instructions, may cause harmful interference to radio or television, for example, when turning on or off the device.

## User manual

- Follow the safety instructions and instructions in this manual.
- This manual should be kept safely for future reference.
- All instructions and warnings that are listed in this manual must be observed.

## Laser (HTC Models)

- The DVD player in this unit contains a laser system of Class 1.
- To avoid exiting radiation, the device must not be opened.
- The laser radiation can cause eye damage.
- Should be necessary repair work, please contact. A specialist or contact your dealer
- Should the device be used in a manner other than the one described here, this may lead to leakage of hazardous laser radiation.

## Satellite receiver

The TV is designed to operate at a receiving system corresponding to the requirements.

- To avoid damage or injury and to ensure operation, let your satellite receiver install by a specialist.
- The receiving system must be grounded in accordance with the regulations!
- If the antenna is not precisely aligned, it may cause picture interference and other reception problems. This may even affect individual stations or be dependent on the weather. Leave your antenna calibration by a specialist garage.
- Use high quality antenna cable.
- If the LNB of your satellite antenna too old, it may no longer be suitable for the reception of all current satellite programs. Let install an LNB that is suitable for the reception of all programs (often called "Digital" or "universal" LNB refers).

Inform yourself. On the website of your satellite operator or specialist shops on the correct orientation of your reception system and current channel lists

## Power Supply

- The device can only be operated with the described voltage at the back. If you do not know the voltage, please consult an electrician.
- To avoid overloading, operate not too many other devices on the same socket.
- Lay power cables necessarily always so that no one can trip over them.



# Safety instructions



- The cable is jacketed and isolated power. Please make any objects on the cable, as this protective function could be lost. Avoid large loads of the cable, particularly at plugs and sockets. If you want to pull out the plug from the socket, always pull the plug, not the cord. The cable could otherwise tear.
- If you do not use the device for an extended period, be sure to unplug the power cord.
- To protect the unit during a lightning storm or when it will be unattended, unplug the power cord from the wall outlet and the antenna cable from the antenna socket. This will prevent damage due to lightning strikes.
- Do not overload outlets, extension cords or any other cables, as this may cause fire or electric shock.
- In the openings of the appliance No objects should be introduced, because in some places current flows and the contact fire or electric shock can result.
- Never remove the cover - there are no parts inside that can be repaired by the user.
- Operate the device only with the supplied AC adapter.

## Antenna

- The analog and/or digital TV tuner are connected to an antenna.
- If you want to connect or disconnect the antenna, please turn the power off before and unplug the power cord from the outlet.
- If you use the device in conjunction with an external antenna, make sure that this is grounded according to regulations.
- If you do not use the device for an extended period, please disconnect the antenna cable.
- An outdoor antenna should not be placed near power lines or other electrical circuits. When attaching such antennas extreme caution because of the contact with such lines can be fatal.

## Pixel errors

The defined on this page has defective pixels (bright, dark pixels, line defects and differences in brightness) describe the maximum allowable defects in type and number, which are excluded from the warranty.

Bright pixels (Bright Dot)	≤ 3
Dark pixels (Dark Dot)	≤ 6
Light + Dark pixels	≤ 6

## Service case

Perform repairs never even through, please do not leave this always qualified personnel. Contact the repair service in the following errors:

- If the power cord is defective.
- If objects have fallen into the unit.
- When the unit come into contact with liquids or penetrated into the equipment.
- When a substance or an object accidentally penetrates the ventilation slots.
- If the unit does not work application. Change only the settings that are described here.



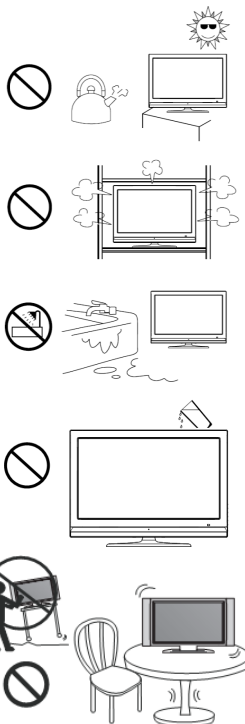
# Safety instructions

- If the device has been dropped and if the product has power fluctuations.
- Use only original spare parts. Unauthorized substitutions may adversely affect the performance and reliability of the device.

Please note the troubleshooting section (page 30) our service addresses and phone numbers.

## Operation and installation

- Place the unit on an unstable surface. The unit may be damaged or people injured. Any attachments should only be fitted by the manufacturer's information or be obtained from the manufacturer.
- This appliance must not be positioned close to moisture and water.
- This product should be moved gently in a TV rack with casters. Jerky stops, uneven surfaces could ensure that the car tipped over possibly.
- The device must be placed at least 8 cm away from the wall.
- The device must be placed at least 10 cm to the side and at least 20 cm from the ceiling / shelf sheet.
- Operate never permanent in 4: 3 mode. This could result in damage to the monitor when used for long periods.
- Do not increase the volume while listening to a quiet passage is played. This could cause damage to the speakers when a loud passage occurs.
- The openings in the case are provided for ventilation, so that the device does not overheat. This must always be kept free.
- The device should be situated away from heat sources, such as Stoves, radiators are positioned.
- Cigarette smoking can penetrate the screen and produce visible contamination in the screen. Damage caused by cigarette smoke will not be corrected under the warranty.
- Avoid heat build-up on the device.
- Protect. The device from moisture, excessive dust and smoke pollution and weathering
- Do not place objects filled with liquids on the apparatus.
- Do not expose the device and the remote control to direct sunlight. This affects the function and could lead to damage.
- Unplug the power cord before cleaning the unit.
- Do not use liquid or aerosol cleaners. The device may only be cleaned with a damp cloth.
- Grasp the unit with wet or damp hands.
- The device is designed for use in private households.
- Keep the sales package. In this the TV can be safely transported.



## Usage

- Reception of digital programs via satellite (DVB-S2), cable (DVB-C) or antenna (DVB-T/T2).
- Play of supported video, image and music files.
- Connection from compatible storage devices.



# Safety instructions

## USB connection

The TV requires possibly some time until the USB storage device is fully loaded and ready for use. Remove the USB device only when all the recordings or reproductions are completed.

The USB ports on this device are not suitable for charging devices with an integrated battery (eg mobile phones, tablet computers, MP3 players, etc.). Note the information regarding on the nameplate and the maximum current output of the USB ports.

### Notes:

- *USB mass storage to 750 GB are supported. Memory devices with greater capacity can be used, however, the compatibility can not be guaranteed under all circumstances to the TV.*
- *A wide variety of USB storage devices will be sold at the time, possibly not all the relevant specifications for USB mass storage devices. If your are not recognized by my TV USB storage device, please try another USB storage.*
- *Should no longer be recognized a USB device, perform with the help of your computer a disk diagnosis or reformat the USB storage device again.*
- *USB devices that require more current than 500mA (0.5A), violate the USB specification and may not work flawlessly together with the television.*
- *Always backup all data from the USB memory before you connect it to the TV.*
- *For the recording of HD broadcasts or use the Timeshift function sufficiently fast USB storage device is needed.*

## packaging content

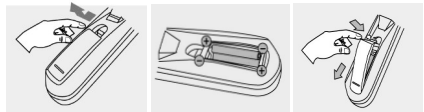
The following components are supplied with the Xoro HTC / HTL Television:

- HD Television
- Remote
- User manual
- power Supply (for devices with external power supply)
- Adapter cable
- Stands

If any of these items are missing, please contact your dealer as soon as possible. Keep the original packaging in the event that the unit must be returned to the dealer.

## Inserting the batteries

- Open the battery compartment on the lower back of the remote
- Insert the batteries into the compartment. Please pay attention when inserting the battery to the correct polarity (+/-).
- Slide the battery cover back on (Figure).



### Notes:

- *Always point the remote control at the sensor array (IR) of the equipment.*
- *The distance to the device should not be more than 5 meters and is not the operation angle is greater than 60 °.*
- *Remove the batteries from the remote control when not using the unit for a long time.*



# Warranty & Recycling Information

In case the products delivered are not free from defects in material or workmanship, MAS Electronic AG has the right to either repair or replace the defective product at its choice. MAS Electronic AG manufactures and repairs goods using components which are new or equivalent to new in accordance with industry standards and practice. The warranty for wearing parts (e.g. rechargeable batteries) is limited to 6 months. In case the device is equipped with internal data storage (e.g. hard disc drive, Flash drive), the customer is responsible to backup his data before sending the device. MAS Electronic AG is not liable for any data loss on returned devices. MAS Electronic AG reserves the right to reset returned devices to factory defaults. Please note your personal settings for this reason.

MAS Electronic AG is not liable for any accessories not belonging to original package content such as DVDs, hard disc drives, Flash storage devices, batteries, etc. This limited warranty covers the warranty requirements set by authorities in your country.

This limited warranty does not cover finishes, accessories or batteries, nor does it cover damage resulting from accident, misuse, abuse, dirt, water, battery leakage, tampering, servicing performed or attempted by unauthorized service agencies. This limited warranty does not cover damages resulting from firmware upgrades. Only in case of firmware upgrades needed to add functions promised at time of purchase, such damages are covered by this limited warranty. For a correct and frictionless completion of warranty or repairs you need a RMA No. You may obtain a RMA on the internet at [www.mas.de/FAQ](http://www.mas.de/FAQ) or by telephone. Please send the device in its original packing material, all standard accessories and a copy of the invoice, a description of defect and the RMA No. to following address. Please note the RMA number clear and in large numbers on the outer package.

## Recycling Information

### Recycling of electronic devices

This product is designed and manufactured with high quality materials and components which can be recycled and reused. This symbol means that electrical and electronic equipment, at their end-of-life, should be disposed of separately from your household waste. Please, dispose of this equipment at your local community waste collection/recycling centre. In the European Union there are separate collection systems for used electrical and electronic product. Please, help us to conserve the environment we live in!



### Recycling of paper and carton

The material recycling symbol on the carton and user manual denotes that they are recyclable. Dispose them not with the normal household waste.



### Recycling of plastic parts

The material recycling symbol on the plastic parts denotes that they are recyclable. Do not dispose them in household waste.



### Green Dot

The "Grüne Punkt" denotes that the MAS Elektronik AG pays a duty to the "Society for Waste Prevention and Secondary Resource Generation".



### EC Declaration

With the CE mark explains Xoro, a registered trademark of the MAS Elektronik AG that this product meets the essential requirements and guidelines of the European regulations.

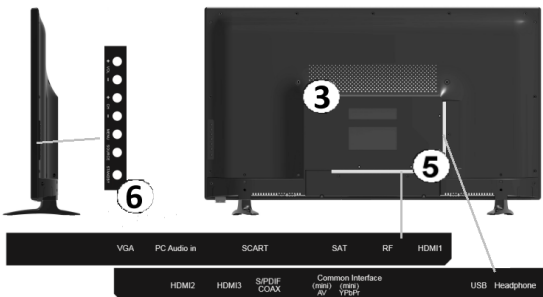
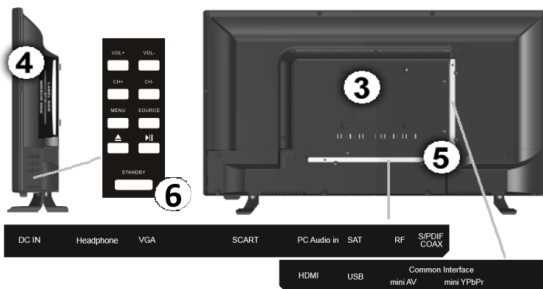




# Device



English



- |   |             |  |
|---|-------------|--|
| 1 | Status LED  | Displays the operating status of the device<br>Red: Standby, Green: In operation,<br>Green / red alternately: PVR recording is in progress<br>De / assembly see page 12  |
| 2 | Stands      |  |
| 3 | Breakpoints | Breakpoints for VESA mounting system (page 12)   |
| 4 | DVD Player  | Starts playback<br>Eject button  |
| 6 | Keys        | Eject button<br>Menu button<br>Select button for inputs<br>Increase / Decrease Volume<br>Channel selection up / down or track advance / retreat<br>To turn the power on / off  |
| 5 | Connections | HDMI port<br>VGA port for PC or Beamer<br>USB 2.0 port for USB mass storage<br>Audio input for VGA port<br>Headphone output<br>Scart port<br>component output (requires adapter cable)<br>audio & video output (requires adapter cable)<br>satellit / connector for cable TV or terrestrial antenna<br>power supply connector / DC Cable<br>digital coaxial audio output<br>Slot for a CI/CI+ module |

► **EJECT**  
**MENU**  
**SOURCE**  
**VOL+ / VOL-**  
**CH+ / CH-**  
**STANDBY**  
**HDMI**  
**VGA**  
**USB**  
**PC Audio In**  
**Headphone**  
**SCART**  
**Mini YPbPr**  
**Mini AV**  
**SAT/RF**  
**POWER**  
**SPDIF COAX**  
**Common Interface**



# Remote Control



## STANDBY

## SOURCE

0-9

## FAV



## P.MODE

## S.MODE

## SLEEP

## TV/RADIO

## INFO



## OK

## MENU

## EXIT

## MUTE

## EPG

## MEDIA

## VOL + / -

## CH + / -

## REC

## T.SHIFT

## AUDIO / I/II

## ASPECT / SIZE

## TEXT

## REVEAL

## HOLD

## SUBPAGE

## R.LIST

## SUBTITLE

## INDEX

## MIX

## Red button

## Green button

## Yellow button

## Blue button



Switches the device on / off or in standby

switching the signal source (page 18)

numeric keys for the channels direct dial

Displays the favorite list

Switches to the previous channel watched

Predefined picture settings

Predefined Sound settings

Sleep Timer / Off Timer

Switches between TV / radio mode

Displays channel information

navigation keys

Confirm selection

Displays the main menu (page 23)

Cancel / Exit

Switches the unit silently

Electronic Program Guide (page 16)

Opens the Media Player (USB 2.0 signal source)

Increase / decrease volume

Next / Previous channel

Starts instant recording (page 17)

Starts a timeshift recording (page 17)

Opens the Audio settings of the active channel

picture format switchover

Switches between TV and teletext

Reveal or hide the hidden words

Freeze the current page

Teletext subpage

Displays a list of existing recordings

subtitles on / off

Jumps to the page 100 (Teletext)

Turns Teletext background transparent

Red function key

Green function key

Yellow function key

Blue function key

Stop button

Start / pause playback

Back / Forward

Previous / Next

In addition, on model HTC 1946:

## D.SETUP

## D.MENU

## EJECT

Displays the settings menu (DVD Player)

Displays the DVD main menu (DVD Player)

Eject DVD (DVD player)

## Note:

Some keys have different functions in other operating modes (TV / DVD mode). These keys are provided on the remote control with two labels / symbols.



## Installation

Make sure that you have when you install all the equipment off and disconnected from the mains securely. Read the instruction manual of the TV and follow the safety instructions there. Pay attention to a careful connection of the connectors.

## Power Supply

Use only the supplied AC adapter to power the Xoro HTC 1946. Please read the information on the nameplate of the power pack.

### Note:

*The power supply provides a stabilized DC voltage of 12V. Operation with a non-stabilized voltage can damage the instrument. Only the supplied power supply, safe operation and compliance with all regulations and standards is guaranteed.*

The HTL 4346 TV has an integrated power supply. Connect the power cord to the power outlet in order to produce the power.

## Connecting to the satellite dish / antenna or cable system

The receiving part of the TV are for digital satellite TV (DVB-S/S2), digital terrestrial television (DVB-T/T2), digital cable TV (DVB-C) and analogue cable TV suitable. Connect the cable of your satellite reception system, antenna system or cable system to the antenna input of the device.

### Notes DVB-S2:

- *Screw the connector of the receiving equipment by hand with the S2 input of the device.*
- *Ensure that there are no shorts on the plug are formed.*
- *Use high quality antenna cable. Substandard cables can cause interference.*

### Notes DVB-T / T2:

- *Plug the connector of the receiving system to the RF input of the device.*
- *Not available in all regions of the DVB-T reception with an indoor antenna is possible. Please seek advice from your dealer.*
- *The TV can not support DVB-T antenna with power.*

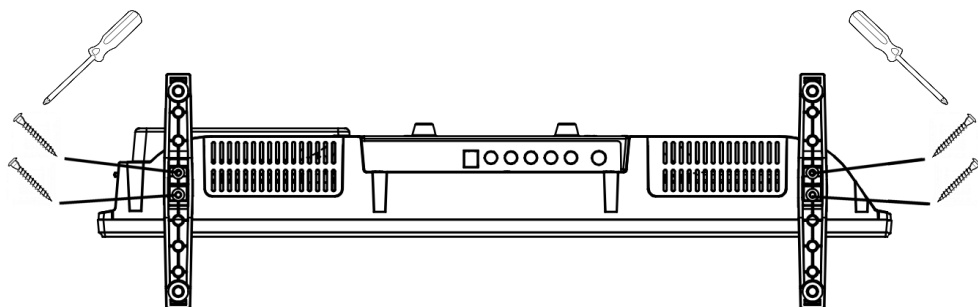
### Notes DVB-C:

- *Plug the connector of the receiving system to the RF input of the device.*
- *In most cable networks the digital commercial broadcasters are basic encryption. You may require a CI + module and a subscription card. Please contact your cable operator.*
- *Old house installation (antenna sockets, switches, amplifiers etc) are not possibly designed for the processing of frequencies of digital television. Please seek advice from a specialist retailer.*

# First Steps

## stands

The TV unit is supplied without its assembled base feet. For mounting the feet, you need a suitable screwdriver. Mount the feet with the accompanying mounting screws to the holes provided on the bottom side.



## Notes:

- *Insert for mounting the feet on the TV on a large, solid surface such as a table. The pad must be larger than the TV!*
- *Take, for example, a towel, a blanket or a sheet to protect the screen from scratches.*
- *The screen is fragile - please exert pressure.*

## Wall mounting

The device is equipped on the back VESA breakpoints for mounting on commercially available monitor/TV bracket systems. In stores you can order suitable holders and the associated mounting hardware.

## Headphone

Use the headphone output allows you to connect headphones or an external hi-fi system. When using the connection the internal speakers of the unit will be automatically turned off.

## Connecting to a HiFi system

You can convert analog audio signals from the AV OUT output or digital audio signals (COAX: S / PDIF, Coaxial) transferred to your HiFi system. The output format for the S / PDIF output can be adjusted in the settings menu (page 28). Select eg. PCM for stereo sound or RAW for surround sound output .

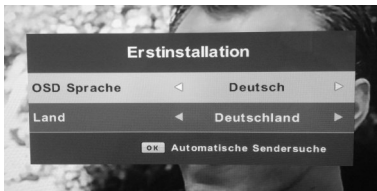


# First Time Installation



Once you have the connection to the antenna or cable, press the **power** button on the remote control or on the TV.

The television takes some time for the starting operation. The color of the LED on the front will change from red to green. After a short time, the "First Time Installation" appears on the screen:



## Language

Press the ◀/▶ buttons on the remote to select the desired OSD language. Use the ▲ / ▼ keys to move to the next / previous menu item.

## Country

Press the ◀/▶ buttons on the remote to select the desired country setting. Use the ▲ / ▼ keys to move to the next / previous menu item.

This takes you to automatic station search (Tuning Setting):

## Tune Type

Choose between analog (ATV) or digital (DTV) tune type.

## Digital Type

Select which tuner (satellite, cable or DVB-T / 2) to be used for the channel search.



## DVB-S2 channel search (Satellite)

The following settings are possible for the automatic station search:

### Satellite

Select the satellite on which your satellite dish is aimed.

### Scan Mode

#### Default

Searches for stations on transponders which stored in the device

#### Blind Search

Performs a transponder search before channel search. the device scans any frequency by TV broadcasters. This process takes longer, but also stations are found on transponders that the device are not known.

#### Service Type

Performs a transponder search without channel search.



# First Time Installation

## Channel Type

If you want to search for all (also encrypted) channels, or only free to air (FTA) channels are included in the search.

## Servicetyp

Do you want to search for radio and TV channels (All), or only for radio (Radio) or TV channels (DTV).



## DVB-C channel search (cable)

The following settings are possible for the automatic channel search:

### Tune Type

Choose between analog (ATV) or digital (DTV) Reception Mode.

### Scan Type

*Full*

*Network Scan*

Performs a fully automatic station search

With this setting, you can define the search parameters (network ID, frequency and symbol rate)



## DVB-T/T2 channel search (antenna)

The following settings are possible for the automatic channel search:

### Tune Type

Choose between analog (ATV) or digital (DTV) Reception Mode.

### Sortiing by LCN

De / Activates Logical Channel Numbering

Press the **OK** button to start the channel search, the **MENU** button to move to the previous menu or **EXIT** to cancel the operation.

### Notes:

- *More extensive configuration options for tuning offers manual tuning (page 24) in the TV settings menu of the device*
- *As to the TV providers sometimes change station positions or new stations are switched, it is recommended from time to time to perform a channel scan of all available TV stations received.*



# Channel search / remote functions



In the window that opens the channel scan, channels found are listed as follows:

**TV** Analog TV channels  
**DTV** Digital TV channels  
**Radio** Digital radio stations  
**Data** channels with data information eg. OTA updates

In the lower part you will see the progress of the station search. To exit the scan is complete, press the **MENU** button.

**Note:**

*You can always perform the initial setup again. To access the wizard, use the main menu of the device (page 28).*


## important functions of the remote

The following describes the functions of the remote control for the tuner operation are described:

### Navigation / OK button

Use the ◀▶ / ▲ / ▼ to navigate through the menus or in the program guide or the channel list. To confirm your selection, press the **OK** button.

### Mute

Press  to disable the tone the remote control button. It appears a crossed speaker symbol. Pressing the button activates the sound back.

### Picture format switching

Press the **ASPECT** button to change the aspect ratio. Choose between automatic setting (Automatic), 16: 9 or 4: 3 aspect ratio or in 2 formats enlarged (zoom).

### Volume / Channel

To adjust the volume, use the **VOL + / VOL-** button on the remote. To change the channel, use the **CH + / CH-** keys or the numeric keys for direct entry of the channel number.


### TV / Radio switchover

The **TV / RADIO** button on the remote control switches between radio and TV stations list. The program list and the functions are in radio mode equal to the TV operation.

### Teletext

The **TEXT** button displays the teletext menu of the current station. Teletext pages are called up by entering the page number with the digit keys 0-9. Using the buttons ▲ / ▼ to scroll forward and backward through the video text. With the colored buttons you can quickly jump to certain teletext pages transmitter depends also. To exit teletext, press the **TEXT** button.

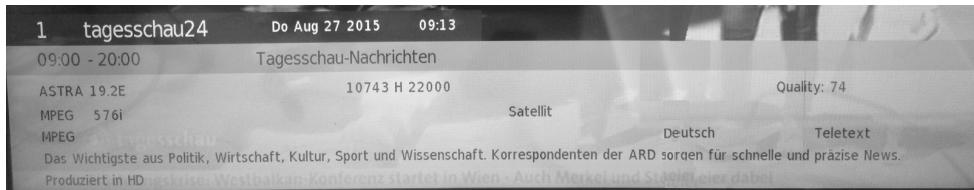
### Recall function

With this function it is possible to switch between the current station and previously watched channel quickly. Press  for this function.



## Program information

Information about the current program is available by pressing the **INFO** button on the remote. In addition to information such as TV program title, date and time, current time, duration of the current program, the broadcast resolution (eg 576i) and whether teletext is available, also EPG information about the current program are displayed. The EPG information you can scroll using the arrow keys **▲ / ▼**. With the **►** button gives you the option to read the EPG information of the next program.



## EPG (Electronic Program Guide)

Press the **EPG** button to display the electronic program guide (EPG). You will now see an overview of all currently running programs for stations sorted. The following buttons and functions are available in this view are available:

<b>▲/▼</b>	Select stations
<b>◀/▶</b>	Select program
<b>Red Button</b>	Programming a timer recording
<b>Green Button</b>	programming reminder
<b>Yellow Button</b>	EPG Show for the previous day of the selected channel
<b>Blue Button</b>	EPG Show for the next day of the highlighted service
<b>OK</b>	switch to the selected channel
<b>INFO</b>	Displays program information for the selected program
<b>EXIT</b>	EPG ausblenden

### Notes:

- The extent to which the program information in the EPG becomes available, depends on the TV channel.
- You may have to first switch to a station to see his program information in the EPG views. Otherwise, you will see the message "No Data".
- Time and Time Zone must be set correctly.
- EPG is not available with analogue television signals.

## Programming timer recording

For programming a timer recording, select the electronic program guide with the **▲ / ▼** to select a program and press the **red** color button on the remote. The program is then shown in red and the stored timer. To edit the timer, press the **MENU** button and call up the *station search* menu, followed by *Timer List*.





# Recording



English

## Instant Record

1. Connect a USB storage to the USB port
2. Make sure, that the USB storage is prepared for recording.
3. The system records a transport stream with the suffix TS.

Select the desired program then press the **REC** button on the remote control to start recording and a progress bar and further operational possibilities will be displayed.  
Press the ◀▶ buttons to choose one option and confirm with **OK**.



- PLAY** Starts the playback of the recording from the beginning. The recording continues in the background.
- PAUSE** Pause of playback
- STOP** Stops the playback (not the recording itself). Two times STOP ends the recording.
- <<** Fast Rewind with the speeds of x2, x4, x8 and x16 times
- >>** Fast Forward with the speeds of x2, x4, x8 and x16 times
- |<** Jumps 30 seconds backward
- >|** Jumps 30 seconds forward

## Playing recorded program

You can play the selected program in the recorded list.

Press the **REC.LIST** button on the remote control to enter the Recorded List, as shown:

Press the **INDEX** button repeatedly to sort the files after Program name, Channel or Time.

## Information about a recorded file

Press the ▲▼ button to select desired file and press the **INFO** or ▶ to display the information of the file.

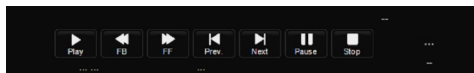
## Playback

Press the ▲▼ button to select desired file and press the **OK** button to playback selected file.

While playing, you can see a playback progress bar as shown below.

## Playback function

- << / >>** Fast Rewind or Forward
- |<< / >>|** Jumps 30 seconds backwards or forwards
- STOP** Stops the playback
- PAUSE** Pause of the playback



## Time Shift Function

This function allows you to pause and fast forward/rewind normal Live DTV viewing at any time without missing any of the live broadcast, provided that a USB storage device is connected. During viewing a DTV program, press the **PLAY/PAUSE** button on the remote control to pause live TV. Press **PLAY/PAUSE** once more to resume the play back. Further operation possibilities prompt upon pressing the **PLAY/PAUSE** button are similar to those in case of recording.

# Signal sources



Press the **SOURCE** button on the remote control you can switch between different input sources. Use the **▲** / **▼** the signal source and confirm your choice with **OK**.

## Satellite

Opens the built-in DVB-S2 satellite tuner.

## DTV

Opens the built-in Combi DVB-C / T / T2 tuner.

## ATV

Opens the built-in analog tuner

## AV IN

You can connect further multimedia terminals with the TV via AV IN. Please press the **SOURCE** button, choose „AV IN“ on the popup window and confirm with **OK**.

## SCART

Audio– and Video signals from a VCR or a setop box can be transmitted by SCART. Please connect a SCART cable with the SCART input on the HTC TV set and with the SCART output on the VCR or setop box. Press the **SOURCE** button, choose „SCART“ in the popup window and confirm by the **OK** button.



## HDMI

HDMI transmits digital audio and video signals. Please press the **SOURCE** button, choose „HDMI“ in the popup window and confirm by the **OK** button.



Supported resolution: 480i, 480p, 576i, 576p, 720p, 1080i, 1080p (24Hz, 50Hz, 60Hz)

Supported audio formats: PCM (stereo)

## Component

You can connect further multimedia terminals with the TV via YPbPr. Plug one end of the video adapter cable into the YPbPr jack on the TV, and the other ends (3-wire video components) to the RCA jack of your multimedia device. Please pay attention to the coloured coding of the cable, inputs jacks (adapter cable) and the video output jacks (source):

- “Y” with the green wire or RCA plug
- “Pb” with the blue wire or RCA plug
- “Pr” with the red wire or RCA plug

With this kind of connection only video signals are transmitted. For listening sound on the TV you should establish also a sound connection. You can take the AV IN port for the sound. Please press the **SOURCE** button, choose „YPbPr“ on the popup window and confirm by the **OK** button.



# Signal sources



English

## VGA

You can use the TV set as a PC monitor by using the VGA interface. Please connect a VGA cable with the VGA input of the TV set and with the PC. With this kind of connection only video signals are transmitted. For listening sound on the TV you should establish also a sound connection. Please connect the white and red wire of the 2-pin component cable with the AUDIO OUT (source) and the stereo jack with the "PC IN" plug of the TV set.

PC-IN



VGA



Nr.	Modus	Auflösung	Frequenz (V)
1	VGA	720 X 400	70 Hz
2		640 X480	60 Hz
3	SVGA	800X600	60 Hz
4	XGA	1024X768	60 Hz
5		1280X720	60 Hz
6	WXGA	1360X768	60 Hz
7		1920X1080 (HTL 4346)	60 Hz

### Notes:

- Before you connect the HTC TV set with the PC, please change the graphic resolution of the PC.
- For displaying the best results, please uses the native resolution of the TV LCD
- 

## Digital Coaxial Sound output

The specifications of DVB broadcast allows to transmit Stereo and/or Dolby Digital sound. To output the Dolby Digital sound you can connect the TV set with a digital amplifier via COAXIAL OUT and listen the sound by a connected speaker set.

Coax



## Earphone

You can connect the a headphone on the TV set. Please insert the 3.5 phone jack into the headphone connector.

Headphone



## USB / MEDIA

Opens the built-in USB Multimedia Player (page 20).

## DVD (HTC Models)

Opens the built-in DVD Player (page 21)



# Multimedia Player



The unit offers a video player. Connect a USB mass storage device for viewing your digital media into the USB input of the device.

Press the **SOURCE** button on the remote and select the USB source. Now use the buttons to select the media type and press the **OK** button.

Now select the disk on which your media are and press the **OK** button again.

There are shown in a preview now all available media. Use the **red** color button on the remote to delete. With the **OK** button You can select individual media for the playlist or to delete, or de / mark.

With the navigation buttons you can select a specific media. With the **OK** button you can call up a larger preview and information. To view the media in full screen, press the **►||** button.



In full-screen mode, a navigation bar appears. Using the **◀ / ▶** buttons to select the individual functions and run with the OK button. The bar disappears Press the EXIT button.

In full screen mode, depending on the medium with the following functions:

<b>&lt;&lt; / &gt;&gt;</b>	Fast reverse or fast forward
<b> &lt;&lt; / &gt;&gt; </b>	jump back or forwards
<b>STOP</b>	To stop playback
<b>PAUSE</b>	Pausing playback
<b>EXIT</b>	Return to Overview
<b>REPEAT</b>	Enables repetition (all media, one medium)
<b>INFO</b>	Displays information about the selected file

With the **EXIT** button on the remote will take you back at any time to the previous menu or exit the media playback.



# DVD Player (HTC Models)



The device has an integrated DVD player. To watch a DVD, press the **SOURCE** button on the remote and select the DVD player as the input source.

Slide the DVD with the printed side facing out (Figure 1) in the DVD slot on the back of the device. The DVD is slot in automatically and start the DVD menu.

## Notes:

- If you have inserted a disc upside down, the drive tries to read the contents of the disc. This is followed by the message "No Disc", the drive opens and pushes the disc possibly outside.
- To eject a CD or DVD from the drive, the unit must be in DVD mode.
- Depending on the conditions when burning, the DVD player supports a number of self-made media. For example, CD-R, CD-RW, DVD-R, DVD + R, DVD-RW, DVD + RW, DVD + R DL, DVD-R DL, DVD-ROM, CD-ROM and CD-DA
- Do not stick tape or labels on the disc, neither on the recordable still on the other side.
- Unfortunately, we can not guarantee that all self-created media can be read.

The following functions of the remote control are available in the DVD mode:



Use the navigation buttons to navigate in the DVD menu and select functions. You confirm your selection by pressing the OK button.

**1-9**



Direct dial chapters or titles or files



**INFO**

Displays the DVD main menu

With the Info button you can click to show information (chapter number, remaining playing time, ect.)

**P.MODE**

Switches between preconfigured image settings (Dynamic, Standard, Mild)

**S.MODE**

Switches between pre-configured audio settings (Standard, Music, Movie, Sports)

**ASPECT**

Choose between automatic setting (Automatic), 16: 9 or 4: 3 aspect ratio or in 2 enlarged formats (zoom)

**SLEEP**



Activates the auto-shutdown (Sleeptimer)



End DVD playback and eject DVD



Stop playback



Play / pause / restart

**D.SETUP**

Shows the DVD setup menu

**D.MENU**

Displays the DVD main menu

**SUBTITLE**

subtitles on / off (if available on DVD media)

**AUDIO**

change language (if available on DVD media)

**I◀▶▶▶**

Previous / Next Chapter



With this button you can forward / rewind. Repeatedly press the button to increase the speed.



# DVD Player



By pressing the button **D.MENU** in DVD operation you can reach the settings menu. In this menu, you can make detailed settings for the device. To select using the navigation buttons. Press the **OK** button to confirm a selection.

## General Setup Page

*TV Display*

Picture format switching between 16: 9 and 4: 3 format language for the DVD mode

*OSD Lang*

*Screensaver*

De / Activates the screensaver when idle

*Last Memory*

If this option is active, the last position in a video is stored and continued after turning on the TV at the same position

## Audio Setup Page

*Speaker Setup*

Settings for the analogue audio output (stereo, left or right audio channel)

*SPDIF/COAX*

Use this setting to define which digital audio signal in DVD mode used for COAX Output (RAW: raw data, PCM: Stereo sound)

## Dolby Digital Setup

*Dynamik*

The term "dynamic" (dynamic range) the ratio of the quietest describes the loudest sound. If the dynamic range is very large, there is both very low and very loud sounds. You can make according to your wishes in this menu settings.

## Other Settings (optional)

These options allow you to specify which language the Start menu of a video DVD starts (disc menu) which subtitle language will be displayed and which audio language is preferred. These settings are only executed when the corresponding languages are also available on the DVD available.

*Youth Protection*

Choose from various youth protection levels and limit thus possibly playing DVDs. The first stage is for discs, which are suitable for all ages, and the eighth stage of discs that ne only for adults are intended.

*Password*

Move the cursor to the info and password, press the OK button, and enter the secret code "123456" (if this is the first use) a. After confirming you will need a new secret code to Entering this and press OK to confirm. Please remember the new secret code, otherwise you will not be able to change the Parental Control. If you forget the code, contact your dealer or our company.

*Factory Reset*

With this function you can restore the factory settings. If you reset select, all user settings are cleared and return the player to the factory settings.



# Main menu



Pressing the **MENU** key to access the main menu of the device. Select using the directional buttons, the function icons. Press the **OK** button to confirm a selection.

The following settings are available in this menu:

## CHANNEL

Opens the channel search when a tuner (satellite, DTV, ATV) has been selected as the source. Depending on the reception of this menu the menu options are different.



### Auto Tuning

Starts automatic tuning (page 13)

### Programm Edit

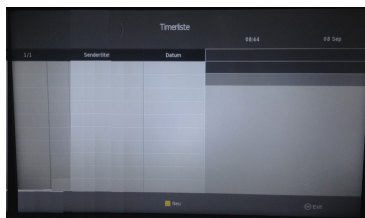
Opens the edit function for the channel list. Here you have the following functions:

**Red Button** delete channel

**Yellow Button** Press the yellow button to select the highlighted channel. Now navigate with the **▲** / **▼** buttons to the desired location and press to move once again achieved the yellow button.

**Blue Button** De / Activates the skipping of the selected radio station when zapping. Selected stations are marked with an icon in the channel list.

**FAV** Adds the selected station to the favorites list or remove it from the list. Favourite channels are marked in the channel list with an icon.



### Schedule List

Opens the Timer List. Find all timers programmed via the EPG (page 16). you can edit later with the blue button or delete with the red button.

With the yellow key you manually create a timer. The following options are available for this purpose:



Typ

Select the channel for the timer record  
Select whether a recording, or just a reminder for the timer record

# Main menu

- Modus** Do you want the programmed Timer repeat (daily, weekly) You can configure the replay here
- Starttime** Configure the start / end time of the programmed Timer

## Signal Informationen

This menu displays information about the signal strength and quality of the selected satellite.

## CI-Informationen

Displays, depending on pickled CI module, information or configuration menu. Further information on the Common Interface slot, refer to page 29.

## Dish Setup / Manual Search

Opens the menu for manual tuning. To be able to perform a channel scan is successful, you some information about your reception system must be known:

- On which satellite your antenna is aligned?
- If you have multiple antennas or an antenna with several LNB you need to know what kind of switch (Toneburst or DiSEqC) you use and on which port which antenna / LNB is connected.

Ask the installer of your antenna system according to, if you some parameters should not be known. If you live in rented accommodation, please ask your landlord.

Are the reception parameters known, you can download a manual tuning as follows perform:

On the left side of this screen you will see a list of satellites, for the TV is prepared. On the right side you will see the settings for the satellite you have selected on the left side. In the middle of the well-known for the satellite transponder (transmission frequencies) are listed.

Navigate with the ▲ / ▼ buttons within the column to select the satellite, the transponder or the setting option.

With the ◀/▶ keys to move between the columns.







# Main menu



Procedure for the manual station search:

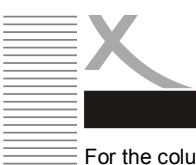
- Use the ▲ / ▼ buttons from the first satellite, you want to set.
- Press the **OK** button. An arrow appears before the selected satellite. The arrow causes the satellite will be considered at the next station search.
- Press the ► button twice to switch to the right side.
- Using the ▲ / ▼ buttons to select the different settings, use the buttons ◀ / ▶ to change this.
- Have you adjusted the settings for the satellite, press the **EXIT** button and then ◀ to switch back to the left side.
- Can you receive with your reception system more satellites, select now the ▲ / ▼ another satellites, press the **OK** button for this, and then make the settings on the right side in front.
- Repeat steps for all satellites that you can receive with your antenna system.

Notes:

- *In the lower part of the menu after the settings for the selected satellite have been carried out correctly and a transponder in the middle, the approximate values for the signal quality displays.*
- *If a satellite is not in the list, you can add it by pressing the yellow button. A window opens, enter the values for longitude, east / west and the tape. Enter the new satellite name. If you add a new satellite, you have the following tuning the search mode "blind search" be used.*
- *When you add a satellite from the list, no signal quality may be displayed despite correct settings. This indicator is only available on satellite, for a transponder list was deposited.*
- *If one transponder in the list is missing, you can add it by pressing the yellow button. Alternatively you can use the search type "blind search" to search for new stations.*

For the satellite and transponder list following configuration options are available:

<b>Red button</b>	Deletes the selected satellite / transponder from the list
<b>Green button</b>	Here you can edit the receiver parameters of the selected satellite / Transponders
<b>Yellow button</b>	Sets manually at a new satellite or transponder. Enter into this menu at the reception parameters. With the OK button, the unit saves the settings and created satellite / transponder appears in the list and can be searched in the transponder scan.
<b>Blue Taste</b>	Starts channel search
<b>OK</b>	Selection / deselection
<b>EXIT</b>	Cancel the search



# Main menu

For the column of the tuning following configuration options are available:

LNB Typ	define the oscillator frequency for your LNB . Please take the correct value from the manual of your LNB (standard:09750/10600)
LNB Voltage	This parameter defines the storm voltage of the antenna, and signal from horizontal or vertical polarized transponder will be received. The setting will only have to be changed in very rare cases. A false setting will result in missing program or no signal reception at all. (standard: On)
22KHz	The receiver can switch the LNB with 22 KHz signals for the reception of another frequency band. The setting will only have to be changed in very rare cases. A false setting will result in missing program or no signal reception at all. (standard: Auto)
Toneburst	Tone burst switcher has two input ports, enabling the connection of 2 antennas or LNB to the receiver. If you have a Tone burst switcher, you will have to select one of the both connections (A or B) for the satellite chosen on the left side.
DiSEqC	DiSEqC switcher has up to 16 input ports enabling the connection of multiple antennas or LNB to the receiver. If you have a DiSEqC switcher, you will have to select one of connections for the satellite chosen on the left side. Please check which version (1.0, 1.1) could be supported in the manual of your switcher.
Motor	Rotatable Antennas require extended configurations. We recommend professional installation from a technician. Please set up according to your antenna.

Use a Unicable reception system, please proceed as follows:

- Navigate in the manual tuning to the right column to the menu item LNB type and press the **OK** button.
- Select from the list at the bottom of the option Unicable and press the OK button to make further adjustments to your Unicable reception system:
  - LNB high / low Define the frequency range for your Unicable LNB. No changes need to be made here normally.
  - User ID Each receiver in a single-cable reception system must be assigned a user ID. Most systems are designed for 4 or 8 receivers. It is important to ensure that only one receiver is assigned a user tape. Uses more than one receiver, the same user ID, it comes to function disorders. Other, incorrectly Receiver can cause the reception of the equipment is impaired.
  - Frequenz Each user band is a frequency band associated with that you must set in this menu item, each user on each band.

Notes:

- Please ask the installer of your reception system, which are user band and what frequency band available to you. In the documents relating to your reception system, this information should be also be found.
- Note that all components of your receiving system for the cable system must be compatible.



When all settings for the manual station search configured press the blue button to search for channels automatically according to your settings to start. The following search options are available:

## Scan Mode

*Standard*

Searches for stations on transponders which stored in the device

*Blind Search*

Performs a scan transponder in front of the station search, in this case the machine will scan from any frequency by TV broadcasters. This process takes a little longer, but also channels on transponders are found which are not yet known to the unit.

*Network*

Performs a transponder search without channel search

## Channel Type

If you want to search for all (also encrypted) channels, or only free to air (FTA) channels are included in the search.

## Service Type

Do you want to search for radio and TV stations (All), or only for radio (Radio) or TV stations (DTV).

Press the **OK** button to start the channel search, or EXIT to cancel the channel search.

### Note:

*As to the TV providers sometimes change station positions or new stations are switched, it is recommended from time to time to perform a channel scan of all available TV stations received.*

In the window that opens the channel scan. channels found are listed as follows:

<i>TV</i>	Analog TV channels
<i>DTV</i>	Digital TV channels
<i>Radio</i>	Digital radio stations
<i>Data</i>	channels with data information eg. OTA updates

In the lower part you will see the progress of the station search. To exit the scan is complete, press the **MENU** button.

## PICTURE

*Picture Mode*

Choose between preconfigured image settings (Dynamic, Standard, Mild) or configure your own settings according to your wishes (Personal) for contrast, brightness, color and hue.

*Color Temp*

Select preconfigured modes for color temperature (Warm, Cool, Normal)

Noise Reduction

Choose between preconfigured modes Noise Reduction (Low, Medium, High or Off)

SOUND

Sound Mode

Choose between preconfigured Audio profiles (Standard, Sport, Movie, Music) or configure according to your wishes own settings (Personal) for treble, bass and balance

Auto Volume

De / Activates the automatic volume leveling

SPDIF Mode

Here you can select whether digital audio signal to be output as raw data or in stereo format (Downmix PCM)

TIME

Timezone

Select the time zone in which you are located.

Sleeptimer

De / Activates the Sleep Timer. After a certain time, the device automatically switches into standby

Auto StandBy

Turns the unit after a certain period of inactivity automatically in the standby

OSD Timer

Specifies the length of time for Menu insertions

SETUP

Language

Setting the language for the menu interface of the device

TT Language

Setting the character set for teletext

Audio Language

Setting the language for the sound

Subtitle Language

Setting the language for subtitling

Aspect Ratio

Setting for the aspect ratio (16: 9, 4: 3, Auto)

PVR File System

Settings for USB recording medium

Select Disk

Disk selection for recording

Check Filesystem

Starts the check for the pre-selected disk

Format

Provides the ability to format the pre-selected disk

Timeshift size

Defines the size used on the attached disk for Timeshift

Free Record Limit

Defines the length of the instant recording

First Time Installation

Starts the initial installation (page 14).

Reset

If the factory settings of the device restores. In this process, you will lose all settings of the device.

Software Update

Starts the software update via a USB storage



# Main menu



## LOCK

*System Lock*  
*Set password*

Global setting for the system lock function in this menu can be changed the default password "0000" with another 4-digit password. First, enter the existing password, followed by two time entering the desired password

If the password function is enabled, the following settings are also available:

*Channel Lock*

In this menu you can select individual channels to be blocked by a password.

*Parental Lock*

De / Activates the protection of minors (aged 4-18 years can be selected). This function depends on the selected channel

*Key Lock*

De / activate the key lock

*Hotelmodes*

In this menu it is possible to protect the settings and the channel list of change.

*Source Lock*

Locks access to one / several signal sources the device

*Default Source*

De / Activates a start transmitter when starting the device

*Start channel*

Specifies the starting channel

*Standard Volume*

Default setting for the Standard Volume

*Max. Volume*

Default setting for the maximum volume

*Database import*

Import Channel List via USB

*Database export*

Export Channel List via USB

*Clear Lock*

Resets all Locks to default

English

## CI / CI+ module

The TV has a slot for CI or CI+ module. You can decrypt pay-TV programs with the module. The modules are available at Pay-TV broadcasters or specialized shops. The smart cards are provided generally by the broadcasters. Modules and smart cards are not part of the delivery. Please insert the module as illustrated about 2-3cm into the slot. Please push a little harder at the end, and you will feel a slight resistance.



### Notes:

*Please insert the module after the channel scan and other settings have been completed. It might take a couple of minutes to activate the module and the smart cards. The module scans the TV each time when the TV is powered on.*

### Notes on CI+:

- *The broadcaster can forbid or limit recording/Time Shift with a CI+ module.*
- *Recordings of programs using CI+ are saved encrypted on the USB devices. The recordings could not be viewed with another device.*
- *The limitation are designated by the broadcasters. The manufacturer does not have influence on this matter.*
- *A CI/CI+ module can generate screen messages. Please refer to the manual of your module.*



# Troubleshooting

Please read the following information to find out the possible cause of a problem before contacting customer service.

Problem	Solution
Device does not turn on	<ul style="list-style-type: none"><li>• Verify that the AC adapter is fully plugged into the outlet.</li><li>• Check if the cable of the power supply is properly connected to the device.</li><li>• plug out power supply, wait 1 minute, and then plug it in again.</li></ul>
No Sound	<ul style="list-style-type: none"><li>• Ensure that the equipment is connected properly</li><li>• Ensure that the input settings for the TV and stereo system are proper.</li><li>• Please make sure, that the audio track exists on the disc.</li></ul>
No DVD/CD playback	<ul style="list-style-type: none"><li>• Condensation had formed, please wait 1 or 2 hours to allow the player dry out</li><li>• Wrong disc, please use only DVD, CD or ISO Data disc</li><li>• The disc may be dirty and require cleaning.</li><li>• Ensure that the disc is installed with the label side up.</li><li>• The disc has too many scratches.</li><li>• The DVD+/-RW should be finalized.</li><li>• Wrong region code by the Video-DVD</li><li>• Cancel the parental lock function or change the parental lock level.</li></ul>
DVD / CD Slot in not works	<ul style="list-style-type: none"><li>• There is already a CD/DVD in the drive. Please refer to this first</li><li>• CD / DVDs can only be inserted or ejected when the TV is in DVD mode.</li></ul>
Some PayTV channels can not be recorded or timeshift not work	<ul style="list-style-type: none"><li>• If a CI + module is used, the television station may prohibit the recording / Timeshift of program. The restrictions on the recording are determined by the broadcasters, device manufacturers must comply with the specifications.</li></ul>
No DVD subtitles	<ul style="list-style-type: none"><li>• Subtitles appear only with disc which contain them</li><li>• Wrong MPEG-4 subtitle format</li><li>• Please rename the MPEG-4 subtitle to the same movie file name (for example movie.avi and movi.srt)</li></ul>

## Contact the Xoro customer service:

Telephone: +49 4161 800 24 24 (Mo-Fr: 11:00 -17:00 Uhr)  
eMail: support@ersservice.de

ERS GmbH Elektronik Repair Service  
Weidegrund 3  
21614 Buxtehude / Niedersachsen  
Germany



# Energy Consumption



English

Trade Mark: **Xoro**  
Model Name: **HTC 1946 HD**  
Energy Efficiency Class: **B**  
Visible Screen Diagonal: **18,56" / 47cm**

Power Consumption (On-Mode, Picture Mode "Standard"): **23W**

Energy consumption **33,58 kWh per year**, based on the power consumption of the television operating 4 hours per day for 365 days. The actual energy consumption will depend on how the television is used.

Power Consumption (Stand By): **0,39 W**  
Screen resolution (physical): **1366 x 768 Pixel**  
Peak luminance ratio: **86 %**

Trade Mark: **Xoro**  
Model Name: **HTL 4346 HD**  
Energy Efficiency Class: **A**  
Visible Screen Diagonal: **43" / 107,9 cm**

Power Consumption (On-Mode, Picture Mode "Standard"): **56,1W**

Energy consumption **34kWh per year**, based on the power consumption of the television operating 4 hours per day for 365 days. The actual energy consumption will depend on how the television is used.

Power Consumption (Stand By): **0,32W**  
Screen resolution (physical): **1920 x 1080 Pixel**  
Peak luminance ratio: **85 %**