

Dismantling information

Intended for use by end-of-life recyclers or treatment facilities

PTL 1400

PTL 1450

PTL 1455

PTL 1400 V2

PTL 1450 V2



Table of contents

Transport	3
Product material information	3
Batteries	3
Tools required	5
Disassembly Procedures	5

Transport

Displays shall be stored in a weatherproof manner. Containers with covers must be used when storing and transporting the Displays.

Product material information

Materials and components	Included	Notes
Printed Circuit Boards (PCB) or Printed Circuit Assemblies (PCA)	Yes	With a surface greater than 10 cm ²
Batteries	Yes	Remote Control
	Yes	Internal Battery
Mercury containing components	No	
Liquid Crystal Displays (LCD) with a surface greater than 100 cm ²	Yes	
Capacitors / condensers (Containing PCB / PCT)	No	
Electrolytic capacitors / condensers measuring greater than 2.5 cm in diameter or height	No	
External electric cables	Yes	Power cable
	Yes	Signal cables
Gas Discharge Lamps	No	
Plastics containing brominated flame retardants	No	
Components and waste containing asbestos	No	
Components, parts and materials containing refractory ceramic fibres	No	
Components, parts and materials containing radioactive substances	No	

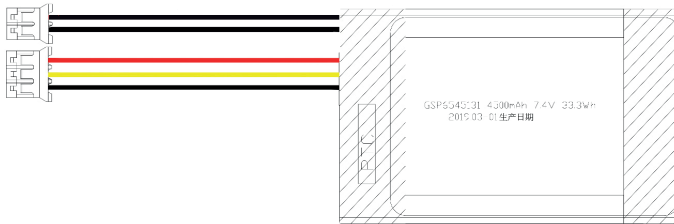
Batteries

Remote Control

2x 1,5V AAA Battery

Internal




Manufacturer	ZHUHAI GREAT POWER ENERGY CO.,LTD.
Model	GSP6545131
Cell Type	Rechargeable Li-ion
Number of Cells	2
Total capacity	7,4V 4500mAh (33,3 Wh)
Total cell mass	160 g



WARNING

- Exercise caution when handling Lithium-ion batteries.
- The cells are covered by a soft aluminium foil. It can be easily damaged by sharp edges of tools.
- Do not crush, drop, mutilate, or penetrate the battery with foreign objects.
- Don't short circuit the battery.
- Do not expose the battery to high temperatures, or disassemble battery packs and cells.
- Do not apply pressure to the surface of the battery.
- Do not bend the battery.

Tools required

Plastic hera jig	
Screwdriver (PH00)	
Pry tool	

Disassembly Procedures

Open the carton with a proper tool.



Original scope of delivery:



Take out the PDTV from PE bag.



Use a screwdriver to remove 2 screws.



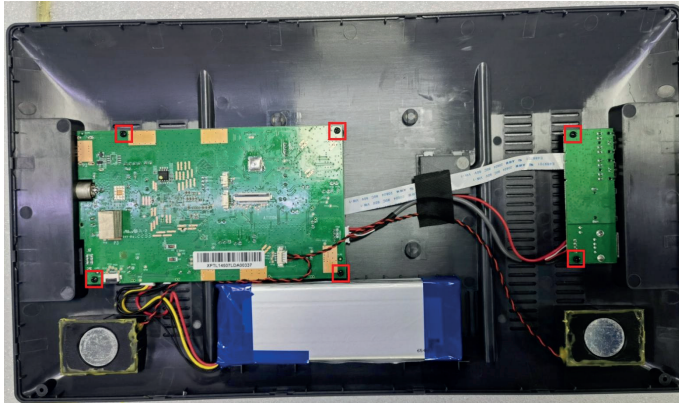
Use a plastic hera jig to open the rear cover.



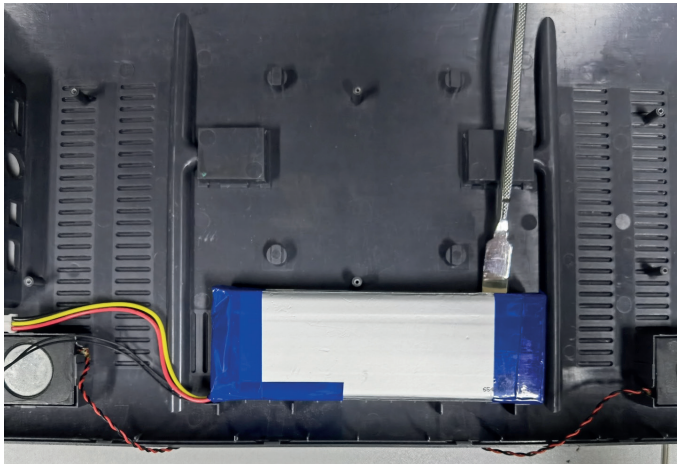
1. Pry up the tab to unlock the connector
2. Unplug the LCD screen data cable
3. Pry up the tab to unlock the connector
4. Unplug the IR cable
5. Unplug the keypad cable (2 PIN)
6. Unplug the keypad cable (3 PIN)



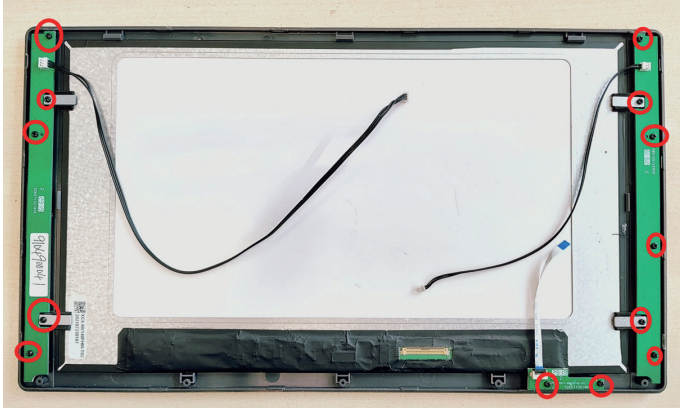
- Remove 6 screws
- Remove the main board and the USB/AUDIO board
- Unplug all cables from the connectors



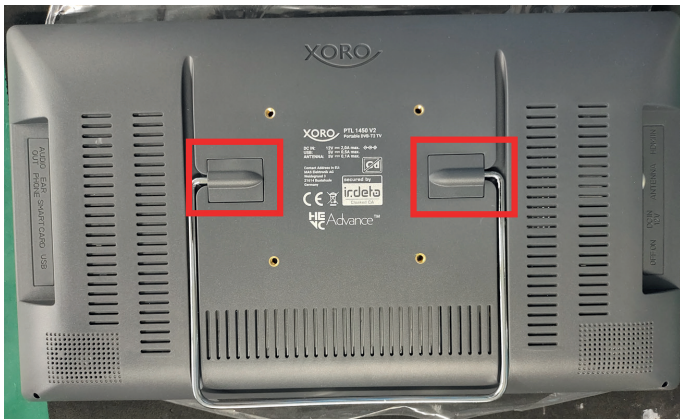
- Use a pry tool to pry up the battery.
- Use a pry tool to pry up the speakers.



- Remove the all remaining screws
- Remove IR-PCB, Keyboard-PCB (left/right) and the LCD Panel.



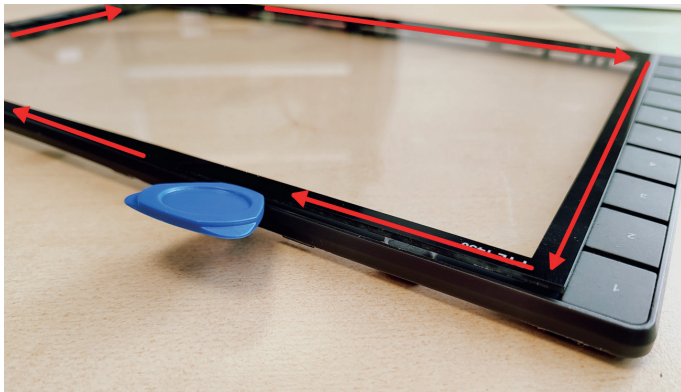
Remove the plastic cover using a pry tool.



Remove 4 screws. The stand can now be removed.



Use a plastic hera jig to separate the glass from the front cover.



WARNING

- The glass may break if too much pressure is applied.

XORO by MAS Elektronik AG

Weidegrund 3
21614 Buxtehude
Germany
www.xoro.de