



中国认可  
检验  
INSPECTION  
CNAS IB0011

# 货物运输条件鉴定报告书

Report for Safe Transport of Goods

Page 1 of 6 Pages

No.: UN2019-6022-2

 海运 By Sea	锂电池 (SP 188) Lithium batteries (SP 188)
---	--

样品名称 ..... **Portable TV PTL 1050/ PTL 1055 (内置可充锂离子电池 GSP6534136)**

Sample Name..... **Portable TV PTL 1050/ PTL 1055 (contain Rechargeable Li-ion Battery GSP6534136)**

委托单位 ..... 珠海鹏辉能源有限公司

Commissioner ..... **ZHUHAI GREAT POWER ENERGY CO.,LTD.**

威凯检测技术有限公司  
**Vkan Certification & Testing Co., Ltd.**



# 货物运输条件鉴定报告书

## Report for Safe Transport of Goods

Ref. No.: UN2019-6022-2

Page 2 of 6 Pages

<b>样品信息/ Sample information</b>		
样品名称 .....	Portable TV PTL 1050/ PTL 1055 (内置可充锂离子电池 GSP6534136)	
Sample name.....	Portable TV PTL 1050/ PTL 1055 (contain Rechargeable Li-ion Battery GSP6534136)	
电池类别/Battery Category .....	锂离子电池/Lithium-ion batteries	
电池型号规格/Battery Type .....	GSP6534136 3500mAh 7.4V 25.9Wh	
电池外观颜色/ Appearance .....	银色/ Silver	
<b>委托单位/ Commissioner information</b>		
委托单位 .....	珠海鹏辉能源有限公司	
Commissioned by .....	ZHUHAI GREAT POWER ENERGY CO.,LTD.	
<b>制造商/Manufacturer information</b>		
制造商 .....	珠海鹏辉能源有限公司	
Manufacturer .....	ZHUHAI GREAT POWER ENERGY CO.,LTD.	
<b>包装件信息/Package information</b>		
包装件重量/Package quantity ..	13.6kg	
电池净重/ Battery net weight...	1.3kg	
电池个数/ Battery Number .....	10pcs	
包装件尺寸/Package size .....	740mm*410mm*220mm	
设备信息/ Equipment info .....	名称/name	型号/model
	Portable TV/Portable TV	PTL 1050/ PTL 1055
<b>时间信息/ Date</b>		
鉴定日期/ Inspection date .....	2019-12-17 ~ 2019-12-24	
报告有效期 Period of validity...	2020-12-31	
<b>鉴定依据/Inspection refer to</b>		
《国际海运危险货物规则》 IMDG CODE (Amdt. 39-18) 2018 Edition		
<b>鉴定结论/ Certification</b>		
<b>1. 运输名称/Proper Shipping name:</b> — 安装在设备中的锂离子电池 (包括锂离子聚合物电池) / Lithium ion batteries contained in equipment (Including lithium ion polymer batteries)		
<b>2. 危险品识别/ Hazards identification:</b> — 无/None		
<b>3. 包装符合 IMDG CODE (Amdt. 39-18) 2018 版特殊规定 188 的要求/ Package complies with the special provision 188 of IMDG CODE (Amdt. 39-18) 2018 Edition.</b>		
签发日期: 2020.1.4 Issue Date: (Stamp of CVC)		

批准人:

Approved by:

黄鲲

审核人:

Reviewed by:

张恩强

鉴定人:

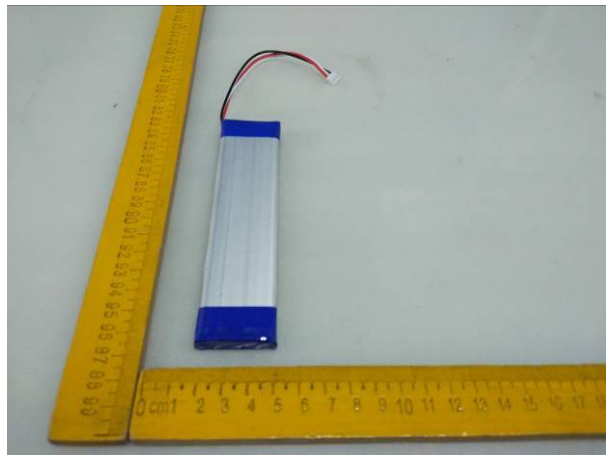
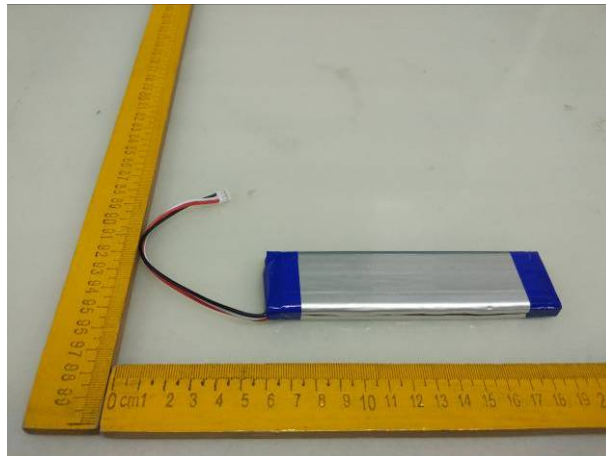
Appraisal by:

魏国华

检查结果及其他事项 Inspection results and other information	
1	本报告所述锂电池已经通过联合国《关于危险货物运输的建议书》第 38.3 节的相关测试要求。UN38.3 测试报告及试验概要编号: <u>RZUN2018-1555 / RZUN2018-1555-TS</u> The Lithium cells/batteries listed in the report are of type proven to meet the requirements of each test in the UN Manual of Tests and Criteria Part III subsection 38.3. The UN38.3 test report and test summary numbers are : <u>RZUN2018-1555 / RZUN2018-1555-TS</u>
2	本报告所述锂电池按照《国际海运危险货物规则》(39-18 版) 2.9.4 (5) 规定的质量管理体系进行制造。 Lithium cells and batteries listed in this report were manufactured under the quality management programmer as described in IMDG CODE (Amdt. 39-18) 2018 Edition 2.9.4 (5) .
3	锂电池具有适当的防短路措施。 设备配备有适当的防意外启动的有效装置。 Cells and batteries are properly protected so as to prevent short circuits. Equipments are properly equipped with an effective means of preventing accidental activation.
<b>备注:</b> <b>Remarks:</b> 该报告中逗号用以代替小数点。 Throughout this report a comma is used as the decimal separator. 该设备型号有 PTL 1050/ PTL 1055 区别仅在于型号名不同, 其它完全一致, 属同一款产品。 The equipment models of PTL 1050/ PTL 1055 are the same products, only different in model names.	

样品照片  
Photos of Samples

电池/ Battery(GSP6534136 3500mAh 7,4V 25,9Wh)



包装照片  
Photos of Packages

包装箱/ Package



# 注 意 事 项

## Important Notice

1. 本鉴定报告书仅对送检样品有效。

This report is valid for the tested samples only.

2. 申请人提供的样品须与实际运输货物一致。

The goods applied for shipment must be in conformity with the tested samples.

3. 本鉴定报告书无鉴定单位印章无效。

This report is invalid without the official stamp of CVC.

4. 本鉴定报告书无批准人、审核人及鉴定人签名无效。

This report is invalid without the signatures of Ratifier, Reviewer and Appraiser.

5. 本鉴定报告书涂改无效。

This report is invalid if altered.

6. 本鉴定报告仅纸质版或电子版原件有效，任何形式未经许可的报告复制件均无效，包括但不限于复印件、传真件及扫描件等。

The original softcopy or hardcopy of this report is the only valid version. Any form of unauthorized copies of the report are invalid, including but not limited to, copy, fax and scan etc..

7. 本鉴定报告书可以通过扫描封面二维码或登录网站 <http://www.cvc.org.cn> 上核实。

This appraisal report can be verified by scanning the QR code on the cover or visiting the website <http://www.cvc.org.cn>.

地 址：中国 广州市科学城开泰大道天泰一路 3 号

Address: No.3,Tiantaiyi Road, Kaitai Avenue, Science City, Guangzhou, P. R. China.

电 话(Tel): (020)32293888

传 真(FAX): (020)32293889

邮政编码(Post Code): 510663

E-mail: office@cvc.org.cn

<http://www.cvc.org.cn>